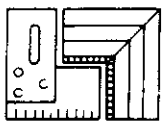


FILET/TRIM CUTTER MAKES WORKING WITH MAT FILET EASIER

Take advantage of the new trend to use mat fillet. Frame Square Fillet/Trim Cutter makes cutting it easy and profitable!

- CUTS WOOD AND PLASTIC MAT FILET LIKE A CHOPPER.
- TOOL STEEL BLADES.
- TWO WAY FENCE, ONE WAY FOR PLASTIC... THE OTHER FOR WOOD.
- HAND OPERATION.
- ADJUSTABLE SCALE. CUSTOM ADJUSTMENT FOR EACH FILET.

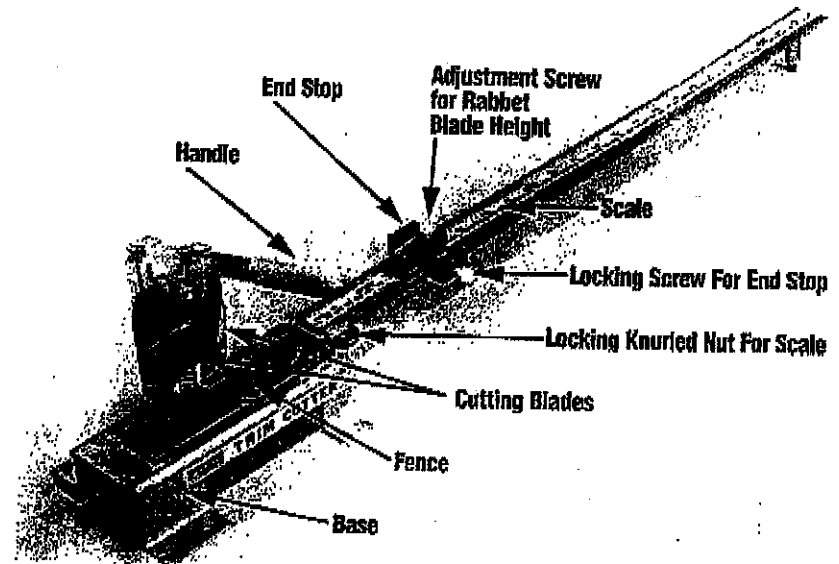


FRAME SQUARE

FRAME SQUARE INDUSTRIES
P.O. BOX 2065 • 314-A DEPOT STREET • MONROE, N.C. 28112
PHONE (704) 289-8760 • FAX (704) 289-9206

TRIM CUTTER BY FRAME SQUARE

Operation Instructions

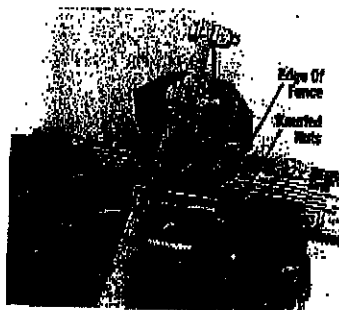


1. Measure Opening

Measure the inside dimensions of the mat opening and record them. These dimensions are used to set the length of cut of the trim.

2. Position Fence

Select the edge of the fence which works best with the trim to be cut. In general, the undercut edge works better with the plastic trim, and the square edge works better with the wood trim. Position the desired edge toward the cutting blades. Move the fence fore or aft until the blades will cut cleanly through the trim. Align the edge of the fence with the parallel lines on the base. Tighten the two knurled nuts to hold the position. In Figure 2, it is shown in position to cut a plastic trim.



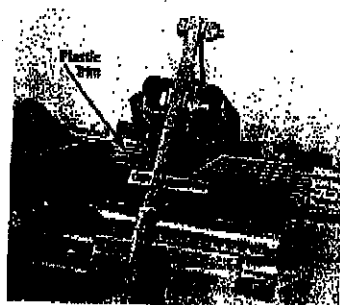
4. Identify Rabbet on Trim

The pointer in Figure 4 shows the rabbet of the plastic trim. The rabbet is the surface which will rest against the inside edge of the mat opening.



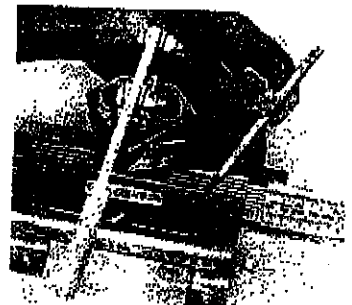
3. First Cut

Position the trim against the fence, and make the first cut.



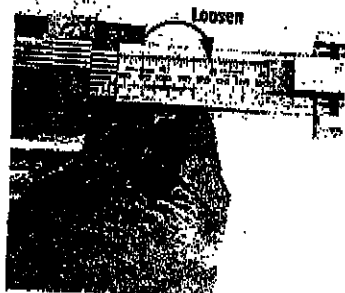
5. Find Rabbet Position in Horizontal Lines

Slide the trim to the right, and identify the position of the rabbet with respect to the horizontal lines on the base. Hold the trim against the fence and look straight down on it to do this. The pointer in Figure 5 shows this position for the plastic trim. (The position will vary for different trim and different fence positions.)



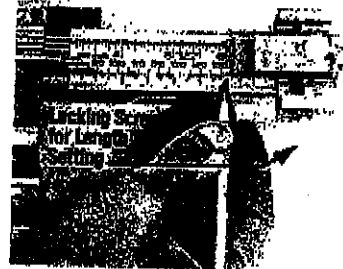
6. Loosen the Scale

Loosen the knurled nut for the scale.



8. Set Length

Use the dimension of the mat opening to set the end stop. Set the end stop so the edge of the thin Rabbet Blade is directly over the desired length. This is also the rabbet length. In Figure 8, the end stop is set at 6 inches. Use the locking screw to hold this position.



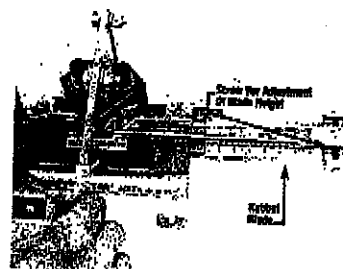
7. Set Scale for Rabbet Position

To work accurately the scale must be set for the rabbet position determined in Step 5. As closely as possible, track the rabbet position to the right where it turns down. The pointer in Figure 7 shows the downward extension of the rabbet for the plastic trim. Slide the scale left or right to align the beginning of the scale with the position. Tighten the knurled nut.



9. Reposition Trim and Cut

Move the trim to the end stop. Use the Rabbet Blade Height adjustment screw to adjust the height of the thin Rabbet Blade until it will fit cleanly against the rabbet edge of the trim. Move the trim until the rabbet rests against the Rabbet Blade. Cut the trim. The length of the rabbet on the cut piece of trim will be the same as the mat opening dimension so the trim piece will fit the opening.

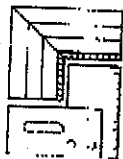


10. Comments

If a trim is difficult to cut, it may be moved to the front of the cutter on top of the fence, and partially cut with an initial pass. Then move it to the proper position for the final cut. Plastic moulding which does not have a flat bottom may be difficult to cut. It may be necessary to shim portions of the bottom of the trim to get a good fit in the corner. Another technique for cutting trim successfully is to cut it slightly oversized and then trim it to fit the mat opening.

11. Caution

The cutting blades are sharp and dangerous. Keep fingers away from the blades.

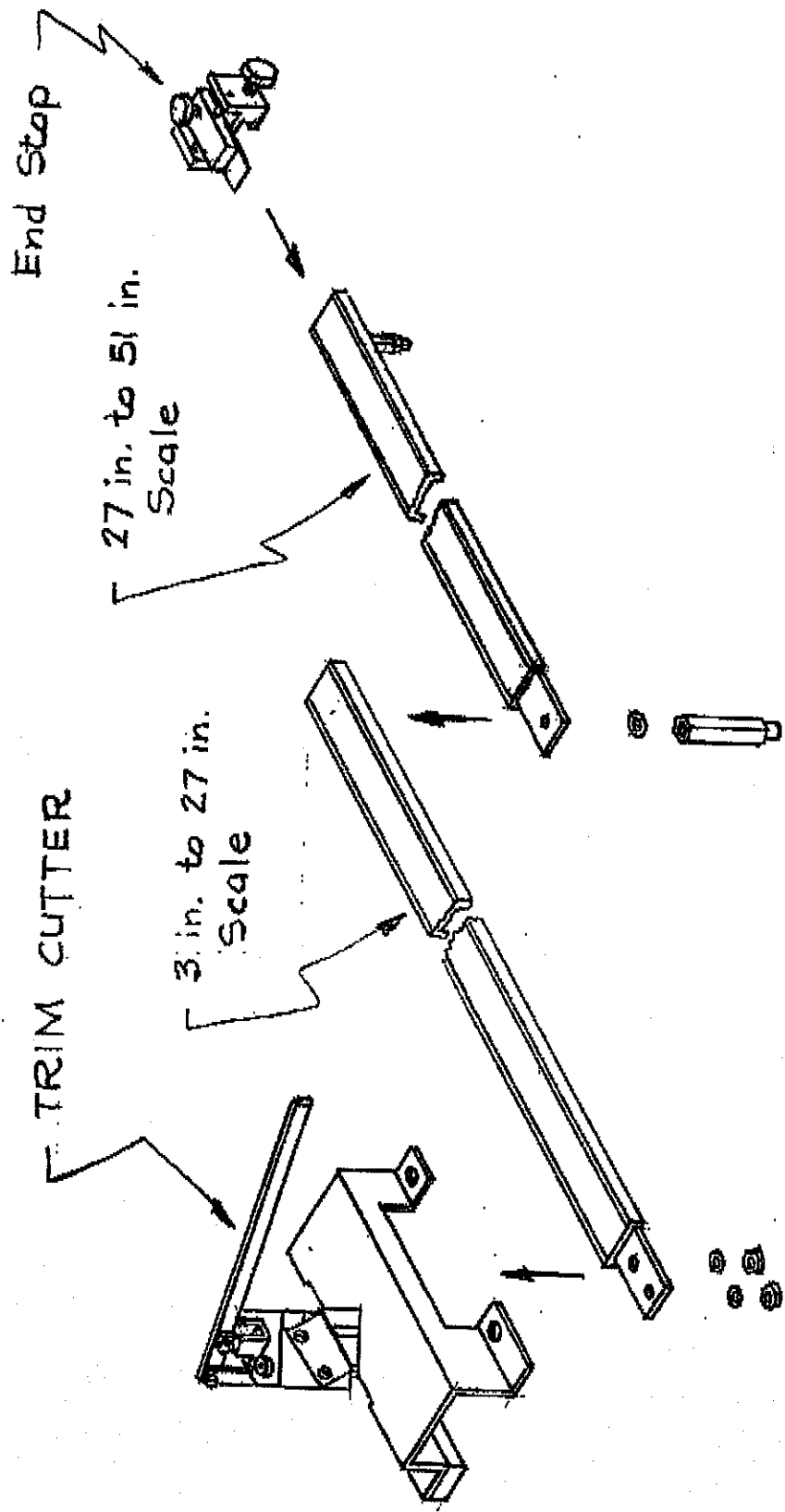


Frame Square

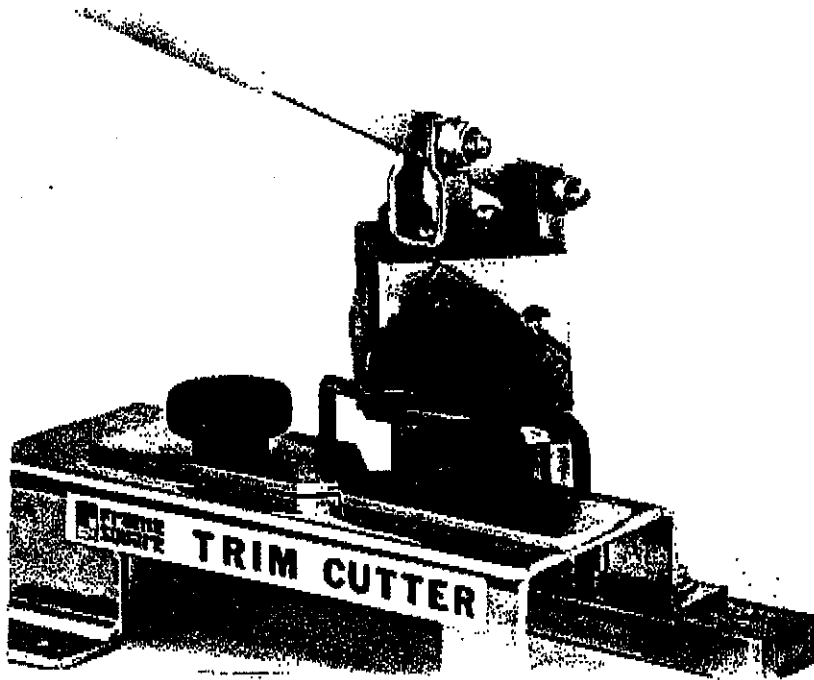
FRAME SQUARE INDUSTRIES

P.O. BOX 2065 • 314-A DEPOT STREET • MONROE, N.C. 28112
PHONE (704) 289-8760 • FAX (704) 289-9206

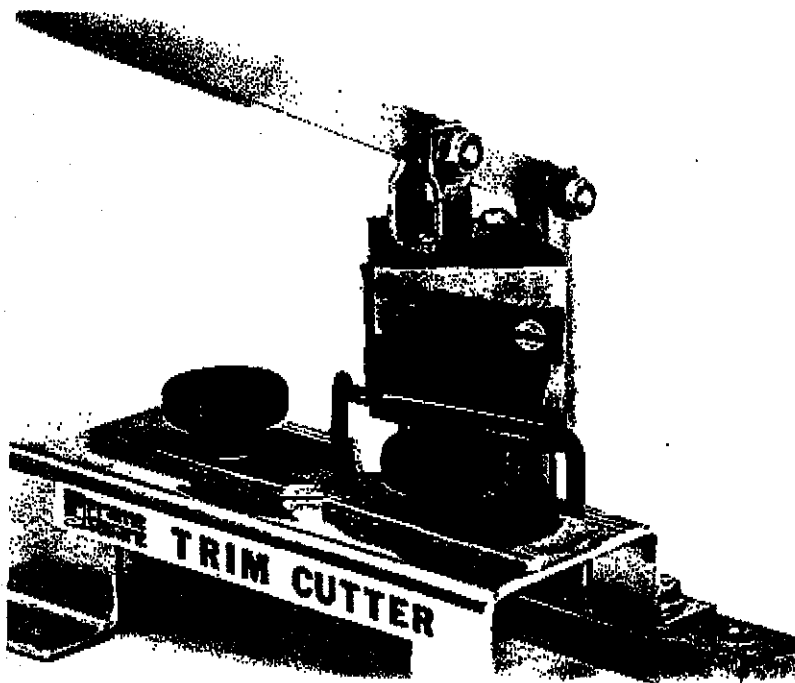
SCALE ASSEMBLY



SUPPLEMENT - TRIM CUTTER INSTRUCTIONS



STANDARD position for blades.
This cuts wood filet good and plastic filet fair.



PLASTIC ONLY position for blades.
This cuts plastic filet better, but wood filet poorer.